

# ASLANTRENDS

NATURAL LUXURY YARNS



## CHILD'S TEXTURED DIAMONDS PULLOVER

Designed by  
Melissa Leapman  
for AslanTrends

ECOLANA



# Child's Textured Diamonds

Designed by Melissa Leapman

## Sizes

Child's Size 4 (6, 8, 10, 12). Instructions are for smallest size, with changes for other sizes noted in parentheses as necessary.

## Finished Measurements

Chest: 30 (32, 34, 35, 36)"

Total length: 15 (16, 17, 18, 19)"

## Materials

- ◆ AslanTrend's *Ecolana*, 4 (5, 5, 6, 7) hanks of #01
- ◆ One pair of sizes 7 and 8 knitting needles or size needed to obtain gauge
- ◆ One cable needle
- ◆ Two stitch markers

## Gauge

In Textured Diamond Patt with larger needles, 22 sts and 24 rows = 4". **To save time, take time to check gauge.**

## Reverse Stockinette St Patt

**Row 1 (RS)** Purl.

**Row 2:** Knit.

Repeat Rows 1 and 2 for patt.

## Twisted Rib St Patt *(over mult 7 + 1 sts)*

See chart.

## Textured Diamond Patt *(over mult 7 + 1 sts)*

See chart.

## Neckband Rib Patt *(over mult 7 + 2 sts)*

See chart.

## Back

With smaller needles, CO 84 (89, 94, 96, 99) sts.

## Set Up Patts

Work Row 1 of Reverse Stockinette St Patt over first 3 (2, 1, 2, 0) sts, place marker, work Row 1 of Twisted Rib Patt over middle 78 (85, 92, 92, 99) sts, place marker, work Row 1 of Reverse Stockinette St Patt across to end row.

Cont even in patts as established until piece measures approx 1 ½ (1 ½, 2, 2, 2)" from beg, ending after WS row.

### **Set Up Patts**

Change to larger needles, work Row 1 of Reverse Stockinette St Patt over first 3 (2, 1, 2, 0) sts, place marker, work Row 1 of Textured Diamonds Patt over middle 78 (85, 92, 92, 99) sts, place marker, work Row 1 of Reverse Stockinette St Patt across to end row.

Cont even in patts as established until piece measures approx 13 (14, 15, 16, 17)" from beg, ending after WS row.

### **Shape Neck**

Work patt as established across first 37 (39, 41, 41, 42) sts, join second ball of yarn and BO middle 10 (11, 12, 14, 15) sts, work across to end row.

BO 3 sts at each neck edge twice, then BO 2 sts at each neck edge once, then dec 1 st at neck edge once, *and at the same time*, when piece measures 14 (15, 16, 17, 18)" from beg, ending after WS row, **shape shoulders** as follows: BO 9 (10, 11, 11, 11) sts at beg of next four rows, then BO 10 (10, 10, 10, 11) sts at beg of next two rows.

## **Front**

Same as back.

## **Sleeves**

With smaller needles, CO 43 (43, 43, 45, 45) sts.

### **Set Up Patts**

Work Row 1 of Reverse Stockinette St Patt over first 0 (0, 0, 1, 1) st, place marker, work Row 1 of Twisted Rib Patt over middle 43 sts, place marker, work Row 1 of Reverse Stockinette St Patt across, if necessary, to end row.

Cont even in patts as established until piece measures approx 1 ½ (1 ½, 2, 2, 2)" from beg, ending after WS row.

### **Set Up Patts**

Change to larger needles, work Row 1 of Reverse Stockinette St Patt over first 0 (0, 0, 1, 1) st, place marker, work Row 1 of Textured Diamonds Patt over middle 43 sts, place marker, work Row 1 of Reverse Stockinette St Patt, if necessary, across to end row.

Cont patts as established, and inc 1 st each side every other row 0 (0, 1, 0, 0) times, every fourth row 6 (11, 16, 16, 14) times, then every sixth row 6 (3, 0, 2, 5) times, working new sts into Textured Diamond Patt as they accumulate—67 (71, 77, 81, 83) sts.

Cont even until piece measures approx 12 (12 ½, 13 ½, 15 ¼, 17)" from beg.

BO.

## **Finishing**

Sew right shoulder seam.

### **Neckband**

With RS facing and smaller needles, pick up and knit 79 (79, 86, 93, 100) sts along neckline.

Beg Neckband Rib Patt with Row 2, and work even until band measures approx 2" from beg.

BO *loosely*.

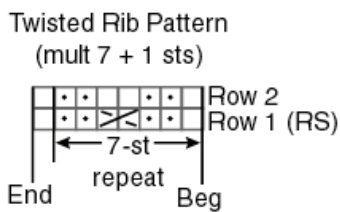
Sew left shoulder seam, including side of neckband.

Fold neckband in half to WS and *loosely* whipstitch into place.

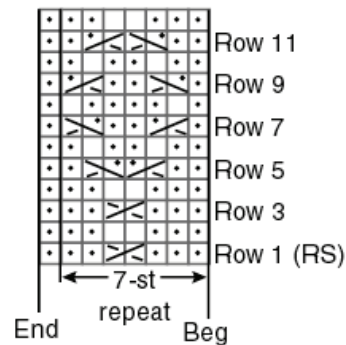
Place markers 6 (6 1/2, 7, 7 1/4, 7 1/2)" down from shoulders.

Set in sleeves between markers.

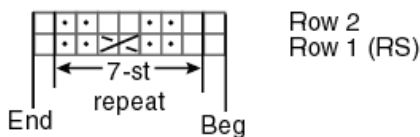
Sew sleeve and side seams.



Textured Diamond Pattern  
(mult 7 + 1 sts)



Neckband Rib Pattern  
(mult 7 + 2 sts)



KEY □ = K on RS; P on WS

• = P on RS; K on WS

⋈ = Right Twist = Slip next st onto cn and hold in back; K1; K1 from cn **OR** K2tog, leaving them on LH needle; insert point of RH needle between these 2 sts and K the first one again

⋈ = Slip next st onto cn and hold in back; K1; P1 from cn

⋈ = Slip next st onto cn and hold in front; P1; K1 from cn

