

ASLANTRENDS

NATURAL LUXURY YARNS



WOMEN'S DIAMOND TEXTURED PULLOVER

Designed by
Melissa Leapman
for AslanTrends

ECOLANA



Woman's Textured Diamonds

Designed by Melissa Leapman

Sizes

Small (Medium, Large, 1X, 2X). Instructions are for smallest size, with changes for other sizes noted in parentheses as necessary.

Finished Measurements

Bust: 36 (39, 41, 44, 46)"

Total length: 24 (24 ½, 25, 25 ½, 25 ½)"

Materials

- ◆ AslanTrend's *Ecolana*, 7 (8, 8, 9, 10) hanks of #0002
- ◆ One pair of sizes 7 and 8 knitting needles or size needed to obtain gauge
- ◆ One cable needle
- ◆ Two stitch markers

Gauge

In Textured Diamond Patt with larger needles, 22 sts and 24 rows = 4". **To save time, take time to check gauge.**

Reverse Stockinette St Patt

Row 1 (RS) Purl.

Row 2: Knit.

Repeat Rows 1 and 2 for patt.

Twisted Rib St Patt *(over mult 7 + 1 sts)*

See chart.

Textured Diamond Patt *(over mult 7 + 1 sts)*

See chart.

Back

With smaller needles, CO 99 (106, 113, 120, 127) sts.

Beg Twisted Rib Patt, and work even until piece measures approx 3" from beg, ending after WS row.

Change to larger needles, beg Textured Diamonds Patt, and work even until piece measures approx 16" from beg, ending after WS row.

Shape Armholes

BO 4 (5, 5, 6, 7) sts at beg of next two rows, BO 2 (3, 3, 3, 4) sts at beg of next two rows, then dec 1 st each side every row 4 (4, 6, 6, 6) times, then every other row 5 (6, 6, 7, 8) times—69 (70, 73, 76, 77) sts.

Cont even until piece measures approx 23 (23 ½, 24, 24 ½, 24 ½)" from beg, ending after WS row.

Shape Shoulders

BO 5 (5, 6, 6, 6) sts at beg of next four rows, then BO 5 (6, 5, 7, 7) sts at beg of next two rows—39 (38, 39, 38, 39) sts rem.

BO.

Front

Same as back until piece measures approx 21 (21 ½, 22, 22 ½, 22 ½)” from beg, ending after WS row.

Shape Neck

Work patt as established across first 27 (28, 29, 31, 31) sts, join second ball of yarn and BO middle 15 (14, 15, 14, 15) sts, work across to end row.

BO 4 sts at each neck edge once, then BO 2 sts at each neck edge twice, then dec 1 st at neck edge every row four times, *and at the same time*, when piece measures same as back to shoulders, shape shoulders same as for back.

Sleeves

With smaller needles, CO 50 sts.

Set Up Patts

Beg Twisted Rib Patt, and work even until piece measures approx 2” from beg, ending after WS row.

Set Up Patts

Change to larger needles, beg Textured Diamonds Patt, and inc 1 st each side every sixth row 3 (7, 11, 15, 15) times, then every eighth row 10 (7, 4, 1, 1) times, working new sts into Textured Diamond Patt as they accumulate—76 (78, 80, 82, 82) sts.

Cont even until piece measures approx 18 ½” from beg.

Shape Cap

BO 4 (5, 5, 6, 7) sts at beg of next two rows, then dec 1 st each side every other row 2 (5, 7, 10, 11) times, then every row 19 (16, 15, 12, 10) times—26 sts rem.

BO 3 sts at beg of next four row—14 sts rem.

BO.

Finishing

Sew right shoulder seam.

Neckband

With RS facing and smaller needles, pick up and knit 79 sts along neckline.

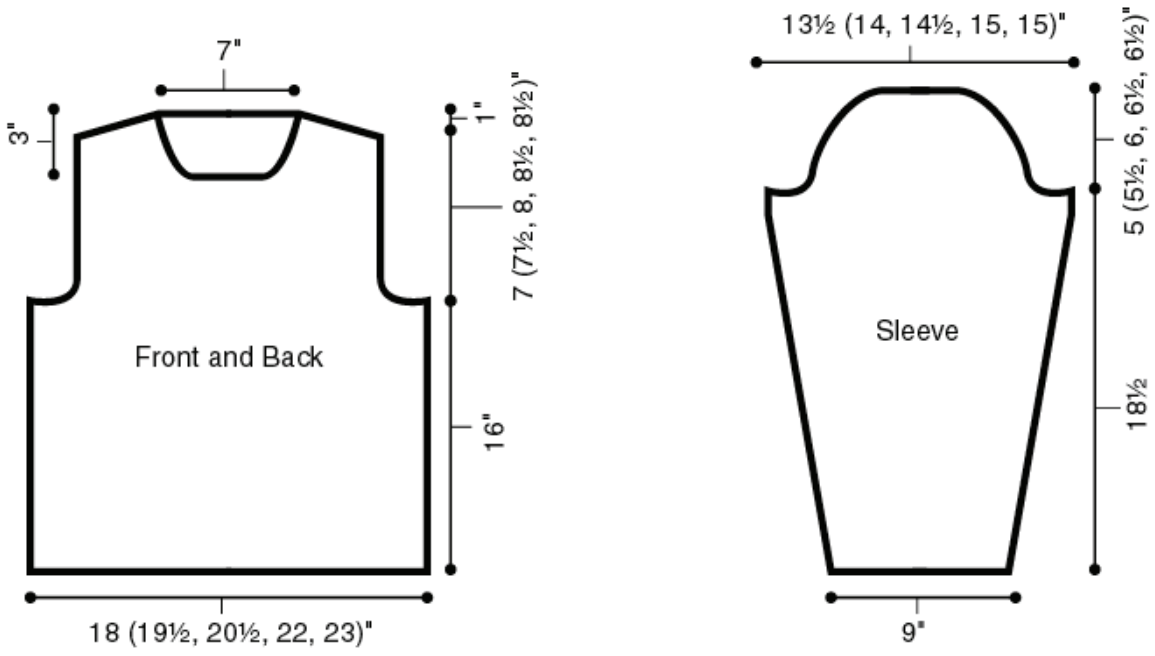
Beg Neckband Rib Patt with Row 2, and repeat Rows 1 and 2 until band measures approx 4” from beg.

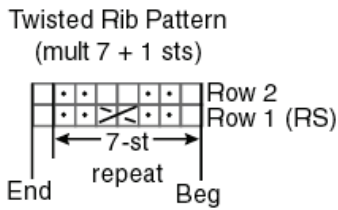
BO *loosely*.

Sew left shoulder seam, including side of neckband.

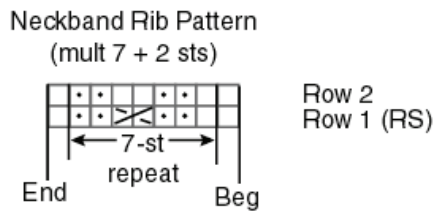
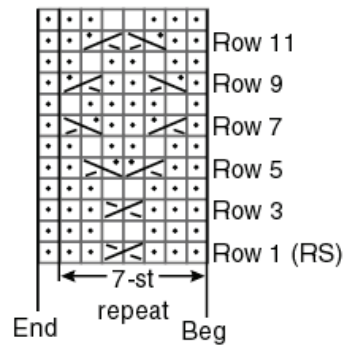
Set in sleeves.

Sew sleeve and side seams.





Textured Diamond Pattern
(mult 7 + 1 sts)



KEY □ = K on RS; P on WS

• = P on RS; K on WS

➤ = Right Twist = Slip next st onto cn and hold in back; K1; K1 from cn **OR** K2tog, leaving them on LH needle; insert point of RH needle between these 2 sts and K the first one again

➤ = Left Twist = Slip next st onto cn and hold in front; K1; K1 from cn **OR** skip first st and K next st *in back loop*, then K the skipped st; slip both sts off LH needle together

➤ = Slip next st onto cn and hold in back; K1; P1 from cn

➤ = Slip next st onto cn and hold in front; P1; K1 from cn